

AMJ 2022 SUSTAINABILITY PROGRAM ENGLISH POS MATERIALS SETUP



OFFER: Buy \$30 in participating P&G products, get a \$10 Prepaid Mastercard®!

*Must spend \$30 or more on participating P&G products in one transaction, before taxes and after discounts and coupons are applied. Redemption in the form of a \$10 Prepaid Mastercard. Purchase receipt must be dated between 3/27/2022 and 6/30/2022 and submitted by 7/7/2022. Complete registration and upload a valid purchase receipt for the qualifying products showing purchase date, purchase location and purchase price. Limit one (1) per person. Must be 18 years or older. U.S. residents only. Product exclusions apply. Available at participating retailers. A limited number of rewards are available, while supplies last. P&G reserves the right to substitute the reward offered for an item of equivalent value, if available. This Card is issued by Sunrise Banks N.A., Member FDIC, pursuant to a license from Mastercard International Incorporated. Mastercard is a registered trademark, and the circles design is a trademark of Mastercard International Incorporated. This card can be used everywhere Debit Mastercard is accepted. Registration, activation, acceptance, or use of this card constitutes acceptance of the terms and conditions stated in the Prepaid Card Agreement. This promotion is not associated, sponsored, or endorsed by Mastercard or Sunrise Banks N.A. Visit PGSustainability.com for full details and Privacy Policy. ©2022 Procter & Gamble

Participating Brands:

9 Elements®, Align®, Always®, Aussie®, Bounce®, Bounty®, Cascade®, Charmin®, Cheer®, Clearblue®, Crest®, Dawn®, Downy®, Downy Unstopables®, Febreze®, Fixodent®, Gain®, Gain Flings®, Gillette® (razors, disposables and gels), Gillette Venus® (razors and disposables), Glide®, Head & Shoulders®, Herbal Essences®, Ivory®, Luvs®, Metamucil®, Mr. Clean®, Olay®, Old Spice®, Oral-B®, Pampers®, Pantene®, Pepto-Bismol®, Prilosec OTC®, Puffs®, Scope®, Secret®, Swiffer®, Tampax®, Tide®, Tide Pods® and Vicks®.

Non-participating brands:

Braun® and Gillette Venus® (cartridges). Not valid for any Prilosec OTC® product reimbursed or paid under Medicaid, Medicare, or any federal or state healthcare program, including state medical and pharmacy assistance programs, or where prohibited by law. Not valid in Massachusetts if any part of the product cost is reimbursed by public or private health insurance. ©2022 Procter & Gamble.

Please put up the enclosed POS materials to support the program.
Installation and placement instructions on the following pages.

Thank you for your support!

AMJ 2022 SUSTAINABILITY PROGRAM

ENGLISH POS MATERIALS SETUP

Kit Contents:

POS Material	Qty	Size
Header Card	1	36" W x 24" H
Header Card Clips	3	--
Display Card OR Aisle Violator w/ Tear Pad	4	10.5" W x 18" H 5" W x 20" H
Aisle Violator	4	9" W x 27" H
Aisle Violator Clips	8	--
Tear Pad	12	5" W x 5" H
Tear Pad Fasteners	8	--
Shelf Wobbler	10	6.5" W x 9" H 6.5" W x 4" H (live)

Store Placement Guide:

Category	P&G Brands
Fabric	9 Elements [®] , Bounce [®] , Cheer [®] , Downy [®] , Downy Unstopables [®] , Gain [®] , Gain Flings [®] , Tide [®] and Tide Pods [®]
Home Care	Cascade [®] , Dawn [®] , Febreze [®] , Mr. Clean [®] and Swiffer [®]
Household Needs	Bounty [®] , Charmin [®] and Puffs [®]
Beauty & Hair Care	Aussie [®] , Head and Shoulders [®] , Herbal Essences [®] , Ivory [®] , Olay [®] , Old Spice [®] , Pantene [®] and Secret
Grooming	Gillette [®] and Venus [®]
Feminine Care	Always [®] and Tampax [®]
Baby	Pampers [®] and Luvs [®]
Oral Care	Crest [®] , Fixodent [®] , Glide [®] , Oral B [®] and Scope [®] ,
Personal Care	Align [®] , Clearblue [®] , Metamucil [®] , Pepto Bismol [®] Prilosec OTC [®] and Vicks [®]

AMJ 2022 SUSTAINABILITY PROGRAM ENGLISH POS MATERIALS SETUP

Please use store placement guide on page 2

Header Card Installation:

- P&G end caps or displays
- Attach clips to bottom of card for secure in-store placement



Aisle Violator Installation:

- In aisle, at shelf
- Use clips for violator placement

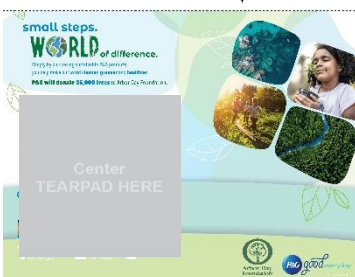


Shelf Wobbler Installation:

- In aisle, at shelf

Display Card & Tear Pad Installation:

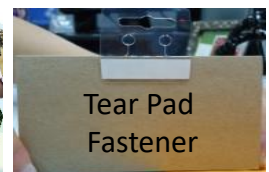
- P&G end cap or in aisle, at shelf
- Attach tear pad to display card
- Place extra tear pads at customer service desk
- Use clips for additional tear pad placement in-store



+



=



Display Card

Tear Pad

Placement Ready